


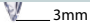



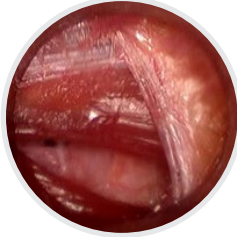

Kii[®]

Abdominal Access Systems

Kii Fios[®]

First Entry Access Systems

THE ONLY INSUFFLATING OPTICAL PORT

Kii Fios Access System	Insufflation Needle	5mm Access System	12mm Access System	
				
		<h3>Minimal Fascial Defect</h3>	<p>True nonbladed access allows for reapproximation of tissue layers with minimal fascial defect once the trocar is removed.</p>	
		<h3>Minimal Penetration with Rapid Insufflation</h3>	<p>Only 3mm of trocar penetration is needed to initiate insufflation.</p>	

Kii

Balloon Blunt-Tip Access Systems

INNOVATIVE BLUNT-TIP TECHNOLOGY



Suture Ties

Maximize instrument reach and facilitate port-site closure.

Now in the 5mm size — the smallest Hasson trocar available!

Gel Cone

Enhances instrument articulation.

Non-Latex Balloon

Provides stable anchoring throughout lengthy procedures while maximizing working space and visibility.

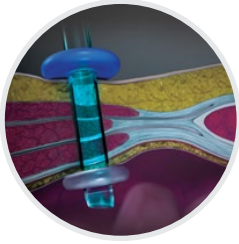
Optical Blunt-Tip Obturator

Facilitates direct visualization during trocar placement.

Kii

Advanced Fixation Technology

SUPERIOR RETENTION



Retention Disk

Reduces migration of the trocar sleeve into the abdominal cavity.



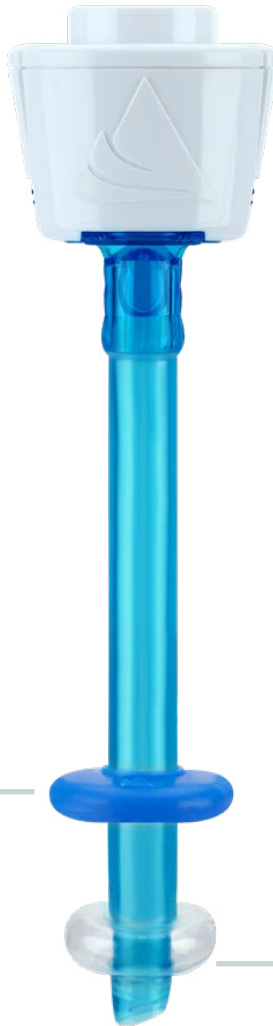
Non-Latex Balloon

Provides unmatched retention.

Maximizes working space and visibility.

Provides pressure on the incision site, potentially reducing port-site bleeding.

Maintains stability throughout procedures.



Kii

Low-Profile Access Systems

SLIM, LIGHTWEIGHT DESIGN



Low-Profile Seal Housing

Optimizes external working space, minimizing interference with adjacent ports.



Low-Profile Kii Seal



Standard 5mm Kii Seal

Z-Thread Sleeve with Extended Threads

Maintains retention at shorter depths, maximizing internal working space and visibility.

Kii Low-Profile Access Systems

Reorder No.			Size
<i>Optical</i>	<i>Bladed</i>	<i>Sleeve</i>	
CTR21	CTB21	CTS28	5 x 55mm
CTR22	CTB22	CTS29	5 x 100mm
CTR23	CTB23	N/A	5 x 55mm, dual pack
CTR24	CTB24	N/A	5 x 100mm, dual pack

Kii

Shielded Bladed Access Systems

SMOOTH, CONTROLLED ENTRY



Intuitive Switch Design

Provides a clear indication of shield position.



Deactivated



Activated

Kii Shielded Bladed Access Systems

Reorder No.		Size
	<i>Advanced Fixation</i>	<i>Z-Thread</i>
N/A	CTB05	5 x 55mm
CFB03	CTB03	5 x 100mm
CFB01	CTB01	5 x 150mm
N/A	C0Q61	8 x 100mm
CFB33	CTB33	11 x 100mm
CFB73	CTB73	12 x 100mm
CFB71	CTB71	12 x 150mm
N/A	CTB14	5 x 55mm, dual pack
CFB12	CTB12	5 x 100, dual pack
N/A	CTB10	5 x 150mm, dual pack
N/A	CTB35	11 x 100mm, dual pack
N/A	CTB75	12 x 100mm, dual pack

Kii

Optical Access Systems

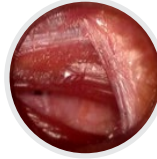
UNPARALLELED OPTICAL CLARITY



Tissue Reapproximation



Initial
Withdrawal



Midway



Complete
Withdrawal

Kii Optical Access Systems

Reorder No.		Size
<i>Advanced Fixation</i>	<i>Z-Thread</i>	
N/A	CTR05	5 x 55mm
CFR03	CTR03	5 x 100mm
CFR01	CTR01	5 x 150mm
N/A	COQ19	8 x 100mm
CFR33	CTR33	11 x 100mm
N/A	CO83	12 x 60mm
CFR73	CTR73	12 x 100mm
CFR71	CTR71	12 x 150mm
N/A	CO837	15 x 100mm
CFR39	CO839	15 x 150mm
N/A	CTR14	5 x 55mm, dual pack
CFR12	CTR12	5 x 100mm, dual pack
CFR10	CTR10	5 x 150mm, dual pack



Kii Fios First Entry Access Systems

Reorder No.		Size
	<i>Advanced Fixation</i>	<i>Z-Thread</i>
CFF05	N/A	5 x 75mm
CFF03	CTF03	5 x 100mm
CFF01	CTF01	5 x 150mm
CFF33	CTF33	11 x 100mm
CFF75	N/A	12 x 75mm
CFF73	CTF73	12 x 100mm
CFF71	CTF71	12 x 150mm
CFF14	N/A	5 x 75mm, dual pack
CFF12	CTF12	5 x 100mm, dual pack
CFF10	N/A	5 x 150mm, dual pack
N/A	CTF35	11 x 100mm, dual pack
N/A	CTF75	12 x 100mm, dual pack



Kii Balloon Blunt-Tip Access Systems

Reorder No.		Size
	<i>Blunt-Tip</i>	
COQ20		5 x 100mm
COR47		12 x 100mm
COR50		12 x 130mm



Kii Sleeves

Reorder No.		Size
	<i>Advanced Fixation</i>	<i>Z-Thread</i>
N/A	CTS03	5 x 55mm
CFS03	N/A	5 x 75mm
CFS02	CTS02	5 x 100mm
CFS01	CTS01	5 x 150mm
CFS12	CTS12	11 x 100mm
CFS22	CTS22	12 x 100mm
CFS21	CTS21	12 x 150mm

Visit www.appliedmedical.com/trocars for more information.

Devices listed may not be approved in all markets. Please contact your Applied Medical representative for more information on availability.

© 2019 Applied Medical Resources Corporation. All rights reserved. Applied Medical, the Applied Medical logo design and marks designated with a ® are trademarks of Applied Medical Resources Corporation, registered in one or more of the following countries: Australia, Canada, Japan, South Korea, the United States, and/or the European Union. 275716-EN-EUR-A